



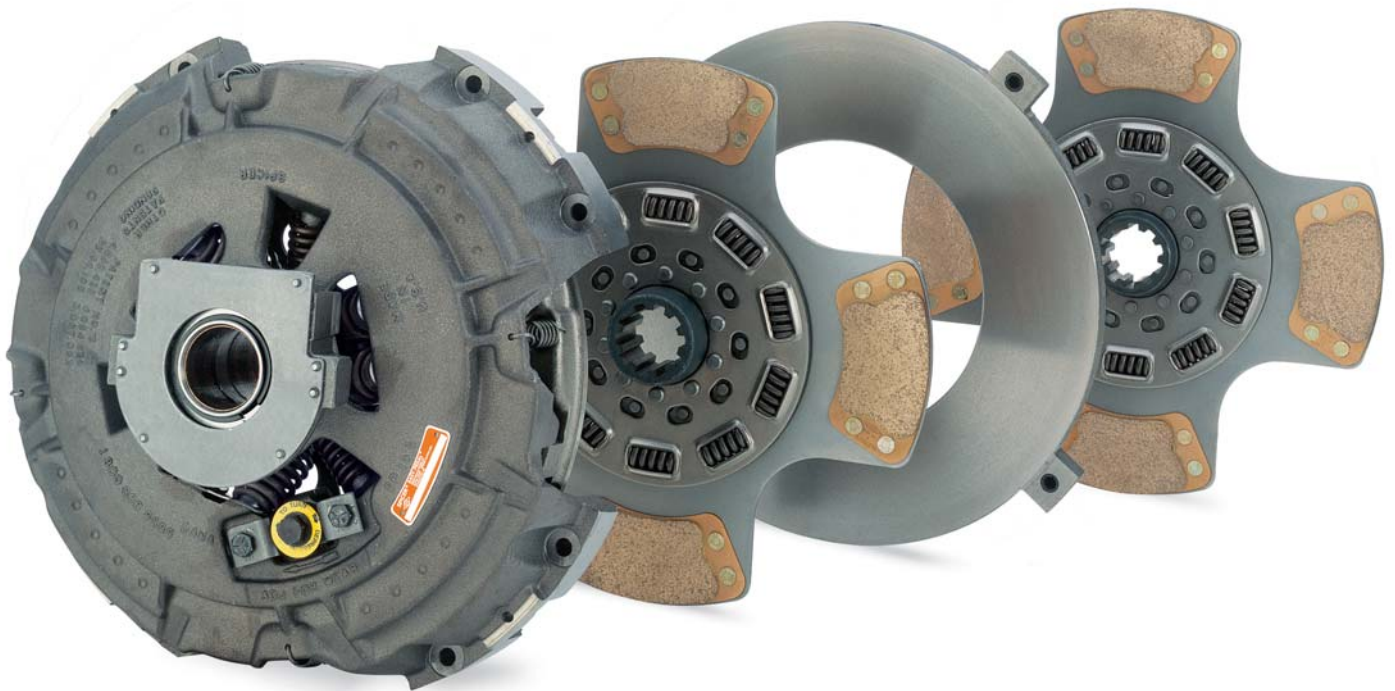
Fuller® Remanufactured Clutches

Fuller® Easy-Pedal™ Heavy-Duty Clutches

Roadranger® More time on the road™

Strengthen Your Competitive Edge

Providing the reliability and durability you need while providing greater cost savings.



You Get What You Pay For.

What's on the outside isn't necessarily what you get on the inside. Illustrated below are techniques rebuilders use to cut costs. These techniques often lead to poor adjustment, reduced clutch life and other potential problems you may encounter with a rebuilt clutch. The fact is, with an Fuller Remanufactured Clutch, you can have dependable Fuller Clutch Technology and warranty protection for just slightly

more money than you'd spend on a less expensive, rebuilt clutch. Unbalanced, misaligned clutches with loose or worn parts or machining imperfections lessen the durability of not only the clutch, but also other drivetrain components, thus damaging bearings and increasing vibration...costing you much more in the long run.

Welded Adjusting Ring

The adjusting ring shown here was split and welded by a rebuilder to compensate for thread wear, resulting in an out-of-round ring. Potential results include vibration, drive-line damage and clutch failure under load. Compare this to Fuller Remanufactured Clutches that are selectively fitted and replaced with new parts if out-of-roundness or worn threads create imbalance or improper fit.



Dampened Disc

The competitor's rebuilt disc shown here contains single springs wrapped in rubber. This could potentially cause the disc to act as a rigid disc, causing increased wear to the input shaft. In contrast, Fuller Remanufactured Driven Discs are available with dampened springs which protect against input shaft spline wear and provide cushioning from torsional vibrations for the entire driveline.

Experience Long-Term Benefits with Cost Savings.

The Easy-Pedal™ Remanufactured Clutch features the reliability and durability you need while providing greater cost savings. All the advantages you enjoy with Easy-Pedal technology, backed by Eaton's 50 years of clutch engineering, ensures driver comfort,

vehicle performance, and cost-effective operations. From the ease of adjustment to the extended life of components, the assurance of quality that comes with the Easy-Pedal Remanufactured Clutch is vital to your driving success.

Easy-Pedal Design

With the use of assist springs, the Easy-Pedal design reduces pedal effort by as much as 50%, increasing driver satisfaction and ease of operation.

Kwik-Adjust®

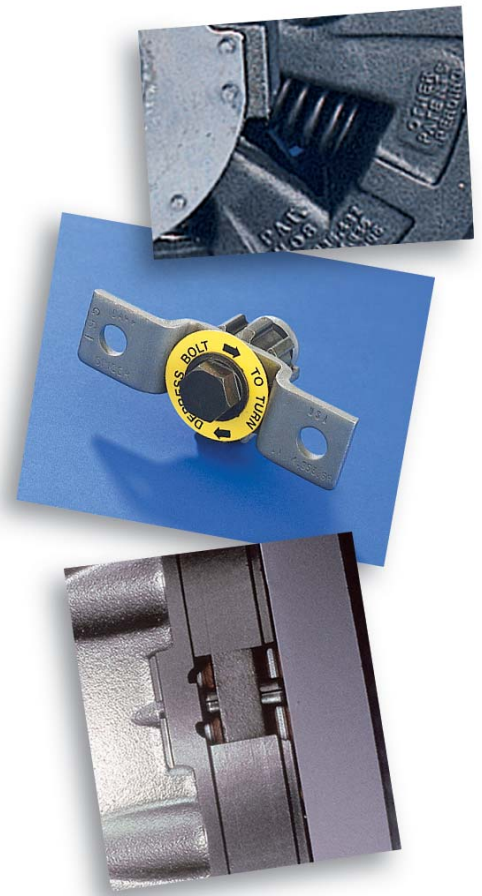
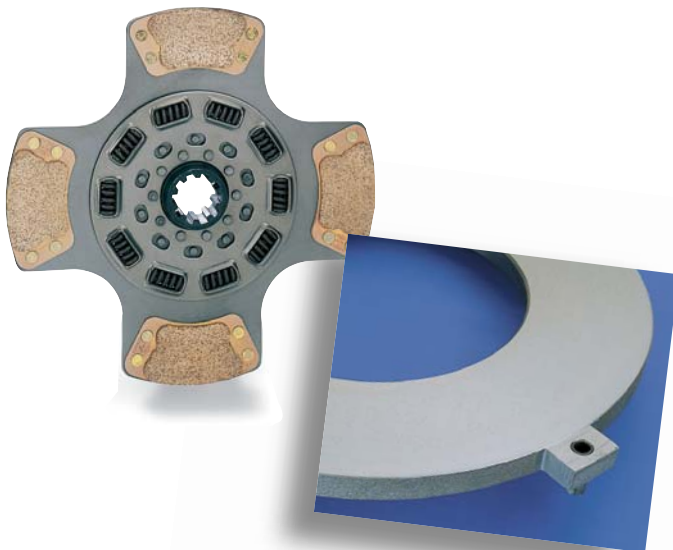
This patented feature of the Easy-Pedal Remanufactured Clutch is a manual adjusting, easy lock component which allows quick access and adjustment. No bolts to remove, no special tools to handle. Simply depress the bolt and turn the hex head adjuster.

Positive Pin™ Separator

Easy-Pedal Remanufactured Clutches with new intermediate plate are equipped with the patented Fuller Positive Pin™ Separator which allows better release. The equal plate separation, smoother engagement, and cooler operation of this feature add up to greater durability.

Intermediate Plate and Driven Discs

Each Easy-Pedal Remanufactured Clutch is fitted with a new Intermediate Plate and like new Driven Discs upon reassembly. These features ensure maximum reliability, durability and long life.



Nationwide Warranty and Support

Eaton's nationwide warranty assures you of the benefits that accompany Easy-Pedal technology with the added benefit of the toll-free Roadranger Sales and Service Office, 1-800-826-4357.

Engineered for Lifetime Performance.

Longer life and trouble-free operation mean less down time...a significant cost savings for you. Fuller's Easy-Pedal™ Remanufactured Clutch brings together the reliability and durability of Fuller

components with the long-term savings that remanufacturing can mean for your operation. Known for its commitment to advanced technology and innovation, Fuller Clutches provide maximum return on your investment.



Assist Springs

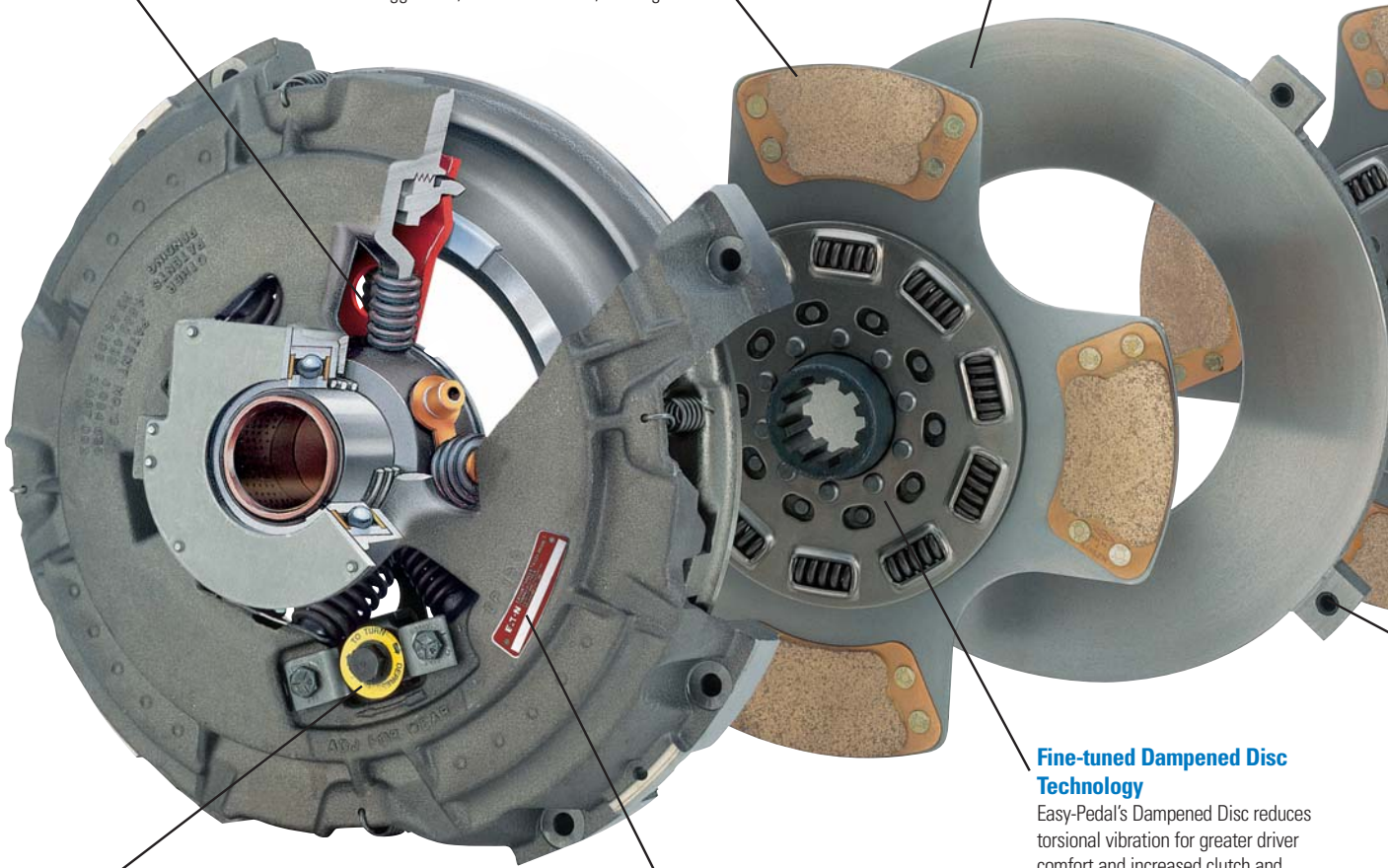
Reduce pedal effort.

Super Button™ Ceramic Facings

Ceramic facings coupled with the Super Button design are built to handle more rugged use, on or off the road, for longer life.

Intermediate Plate

Our Intermediate Plate adsorbs and diffuses as much as 30 percent more heat, reducing wear on clutch components.



6-Position Kwik-Adjust®

Easy access, easy adjustments and no special tool requirements.

Name Plate

Ensures that the clutch includes only genuine Fuller parts, meets OE specifications and is a genuine Fuller Remanufactured Clutch.

Fine-tuned Dampened Disc Technology

Easy-Pedal's Dampened Disc reduces torsional vibration for greater driver comfort and increased clutch and drivetrain durability.

NOTE: The photo shown above depicts an improved Easy-Pedal retainer design. Depending on the age of the core, some remanufactured clutches may utilize a modified Easy-Pedal retainer.

Fuller's Remanufacturing Process Ensures Quality

Driven Discs

Ensure maximum reliability, durability and long life.



Positive Pin™ Separator

Assures equal plate separation. Thus, giving longer clutch life. (With new intermediate plates only!)

The Easy-Pedal™ Remanufactured Clutch provides added value to your initial investment. Each Easy-Pedal Clutch is disassembled and remanufactured by Eaton with genuine Fuller parts. These quality components include like new driven discs and new intermediate plates which ensure maximum reliability and extended life. The clutch is then inspected to ensure that each component, as well as the finished assembly, adheres strictly to original equipment specs and guidelines. These tough standards result in tough remanufactured clutches.

A unique advantage that Fuller Clutches have over other rebuilders and remanufacturers is direct access to the same designs, engineering and testing resources that went into the original clutches. With this valuable information, Eaton knows exactly how far to go — and where to stop — when it comes to machining and component salvage.



14" and 15.5" Available

Easy-Pedal Remanufactured Clutches are available in both 14" and 15.5" clutch sizes.

Fuller Easy-Pedal Remanufactured Clutches — genuine Fuller Clutch reliability. Built to last. Built to perform.



Name Plate

To assure that you are getting the reliability and performance you expect from Fuller Clutches, each Easy-Pedal Remanufactured Clutch is given an Easy-Pedal Remanufactured name plate. This is your guarantee that the clutch not only includes all genuine Fuller parts and meets OE specification, but is a genuine Fuller Clutch.



Fuller Remanufactured Easy-Pedal® 14" & 15.5" Specifications:

| EP Reman Part # | New EP Part # | Size IN. (MM) | Plate Load lbs. | Max Torque lbs.ft. NM. | Spline Size | Damper Style | Springs | Facing Material | Facing Number |
|-----------------|---------------|---------------|-----------------|------------------------|-------------|--------------|---------|-----------------|---------------|
| 108034-61MO | 108034-61 | 14" (350) | 2800 | 1000 1356 | 2" | Coax. Ft. | 8 | Ceramic | 3 |
| 108034-82MO | 108034-82 | 14" (350) | 3600 | 1150 1560 | 2" | Coax.Ft. | 8 | Organic | N/A |
| 108050-59MO | 108050-59 | 14" (350) | 3200 | 1400 1898 | 2" | Coax.Ft.SD* | 8 | Ceramic | 4 |
| 108391-74MO | 108391-74 | 15.5" (394) | 3600 | 1650 2237 | 2" | Coax.Ft. | 10 | Ceramic | 4 |
| 108391-81MO | 108391-81 | 15.5" (394) | 3600 | 1400 1898 | 2" | Coax.Ft. | 8 | Ceramic | 4 |
| 108391-82MO | 108391-82 | 15.5" (394) | 4000 | 1400 1898 | 2" | Coax.Ft. | 8 | Organic | N/A |
| 108935-61MO | 108935-61 | 15.5" (394) | 3600 | 1760 2373 | 2" | Coax. | 9 | Ceramic | 4 |
| 108935-82MO | 108935-82 | 15.5" (394) | 3600 | 1650 2237 | 2" | Coax.Ft. | 7 | Ceramic | 4 |

*SD=Super-Duty

| EASY-PEDAL REMAN P/N | Replaces Part Numbers | |
|--|-----------------------|-----------|
| 108034-61MO | 108034-61 | 107034-53 |
| Ceramic Facing Material (Maximum Torque 1000lb.ft.) | 107034-61 | 108034-19 |
| | 108034-53 | 107034-19 |

| EASY-PEDAL REMAN P/N | Replaces Part Numbers | |
|--|-----------------------|-----------|
| 108034-82MO | 108034-82 | 107034-54 |
| Organic Facing Material (Maximum Torque 1150lb.ft.) | 107034-82 | 108034-32 |
| | 108034-57 | 107034-32 |
| | 107034-57 | 108034-30 |
| | 108034-54 | 107034-30 |

| EASY-PEDAL REMAN P/N | Replaces Ceramic Numbers | | Replaces Organic Numbers | |
|--|--------------------------|-----------|--------------------------|-----------|
| 108050-59MO | 108050-59 | 108034-61 | 108034-57 | 107034-30 |
| Ceramic Facing Material (Maximum Torque 1400lb.ft.) | 108050-58 | 107034-61 | 107034-57 | 108034-32 |
| | 107050-58 | 108034-53 | 108034-54 | 107034-32 |
| | 108050-52 | 107034-53 | 107034-54 | 108034-82 |
| | 107050-52 | 108034-19 | 108034-30 | 107034-82 |
| | 108050-1 | 107034-19 | | |
| | 107050-1 | | | |

| EASY-PEDAL REMAN P/N | Replaces Ceramic Numbers | | Replaces Organic Numbers | |
|--|--------------------------|-----------|--------------------------|-----------|
| 108391-74MO | 107091-74 | 107091-52 | 108391-82 | 107091-59 |
| Ceramic Facing Material (Maximum Torque 1650lb.ft.) | 108391-81 | 108391-55 | 107391-82 | 108391-71 |
| | 107391-81 | 107391-55 | 107091-82 | 107391-71 |
| | 108391-80 | 107091-55 | 108391-83 | 107091-71 |
| | 107391-80 | 108391-75 | 107391-83 | 108391-79 |
| | 108391-52 | 107391-75 | 107091-83 | 107391-79 |
| | 107391-52 | 107091-75 | 108391-77 | 107091-79 |
| | | | 107391-77 | 108391-78 |
| | | | 107091-77 | 107391-78 |
| | | | 108391-59 | 107091-78 |
| | | | 107391-59 | |
| | | | 107391-27 | |
| | | | 107091-27 | |
| | | | 107391-10 | |
| | | | 107091-10 | |

Requires 8.562 Flywheel Bore Minimum.

| EASY-PEDAL REMAN P/N | Replaces Ceramic Numbers | | Replaces Organic Numbers | |
|--|--------------------------|-----------|--------------------------|-----------|
| 108391-81MO | 107091-81 | 107091-52 | 108391-82 | 107391-10 |
| Ceramic Facing Material (Maximum Torque 1400lb.ft.) | 107091-81 | 107091-55 | 107391-82 | 107091-10 |
| | 107091-80 | 107091-75 | 107091-82 | 107391-59 |
| | 107091-80 | 107091-75 | 108391-83 | 107091-59 |
| | 107091-52 | | 107391-83 | 108391-71 |
| | | | 107091-83 | 107391-71 |
| | | | 108391-77 | 107091-71 |
| | | | 107391-77 | 108391-79 |
| | | | 107091-77 | 107391-79 |
| | | | 107391-27 | 107091-79 |
| | | | 107091-27 | |

| EASY-PEDAL REMAN P/N | Replaces Ceramic Numbers | | Replaces Organic Numbers | |
|--|--------------------------|-----------|--------------------------|-----------|
| 108391-82MO | 108391-83 | 107391-77 | 108391-59 | 108391-79 |
| Ceramic Facing Material (Maximum Torque 1400lb.ft.) | 107391-83 | 107091-77 | 107391-59 | 107391-79 |
| | 107091-83 | 107391-27 | 107091-59 | 107091-79 |
| | 108391-82 | 107091-27 | 108391-71 | 108391-70 |
| | 107391-82 | 107391-10 | 107391-71 | 107391-70 |
| | 107091-82 | 107091-10 | 107091-71 | 107091-70 |
| | 108391-77 | | | |

| EASY-PEDAL REMAN P/N | Replaces Part Numbers | |
|---|-----------------------|-------------|
| 108935-61MO | 108925-51 | 108935-51MO |
| Ceramic Facing Material (Mack engines only, E6-E7) (Maximum Torque 1650lb.ft.) Requires 10" flywheel bore minimum. | 107925-51 | 108925-50 |
| | 107625-51 | 107925-50 |
| | 108935-51 | 107625-50 |

| EASY-PEDAL REMAN P/N | Replaces Part Numbers |
|---|-----------------------|
| 108935-82MO | 108935-82 |
| Ceramic Facing Material (Maximum Torque 1650lb.ft.) Requires 10" flywheel bore minimum. | |

Roadranger®



For spec'ing or service assistance, call 1-800-826-HELP (4357) 24 hours a day, 7 days a week (Mexico: 001-800-826-4357), for more time on the road. Or visit our web site at www.roadranger.com.

Roadranger: Eaton, Dana and other trusted partners providing the best products and services in the industry, ensuring more time on the road.